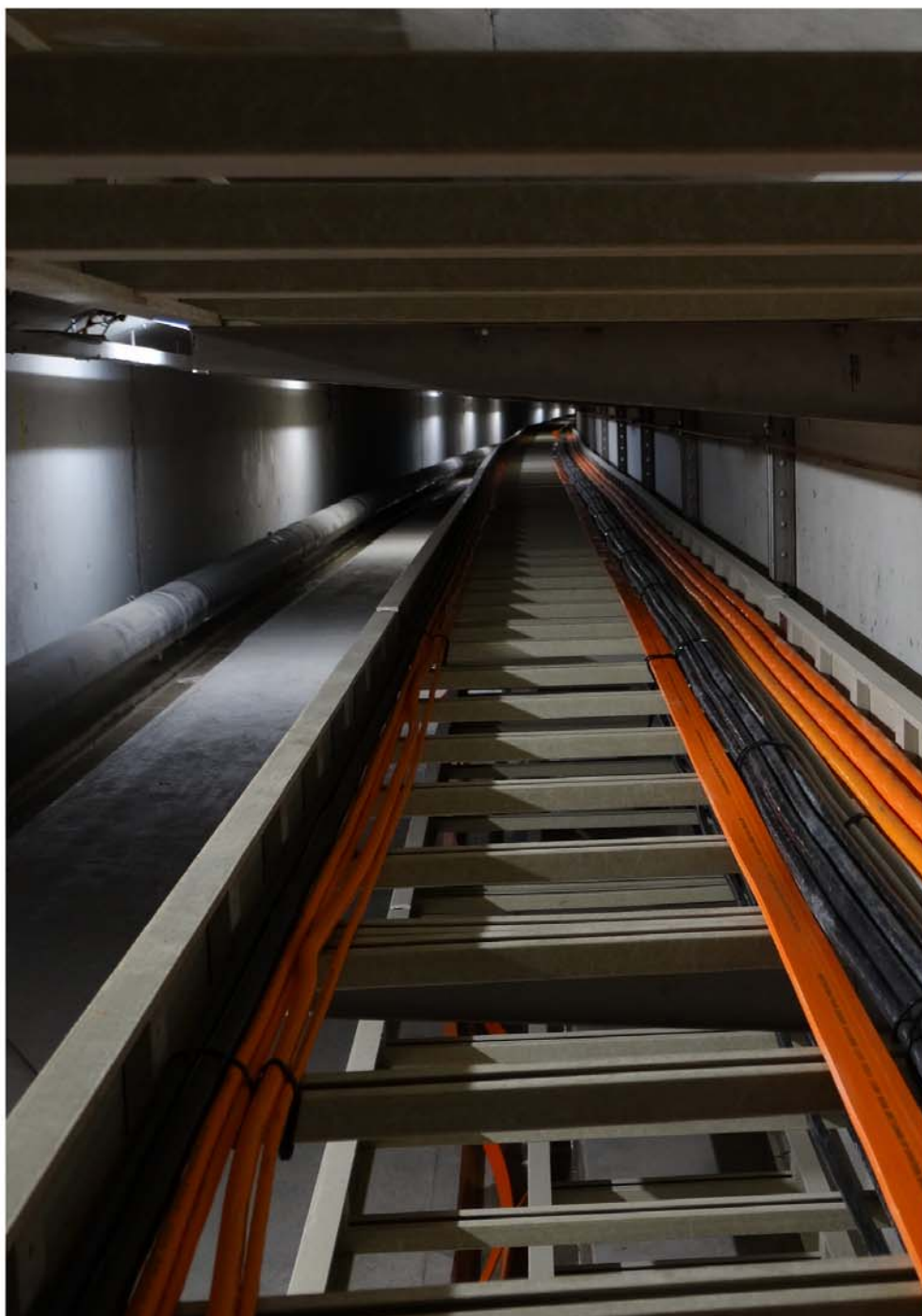


Biel East Branch Bypass

Operating and Safety Equipment Biel East Branch Bypass



The watch-world metropolis Biel is the largest bilingual city in Switzerland. The private and public sectors are currently investing billions of Swiss francs in residential, infrastructure and industrial buildings and will continue to do so in the coming years. The objective is to pave the way for improved quality of life and work through planning priorities.

By building the Biel bypass, the canton of Bern wants to redirect regional transport and to guide it mainly underground through the agglomeration. This will reduce the level of through traffic in the city.

Client
Canton of Bern

Realisation
2016

Commissioning
2017





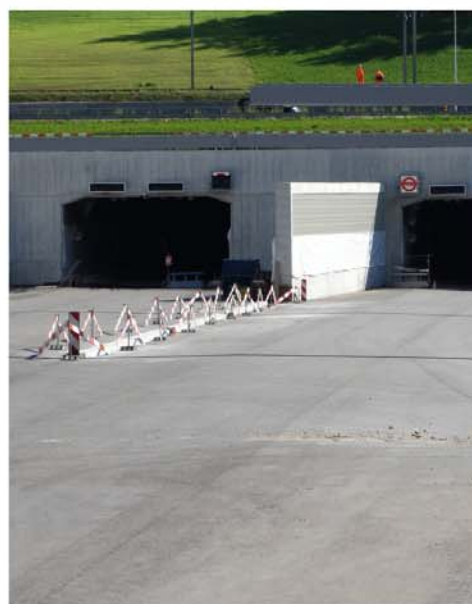
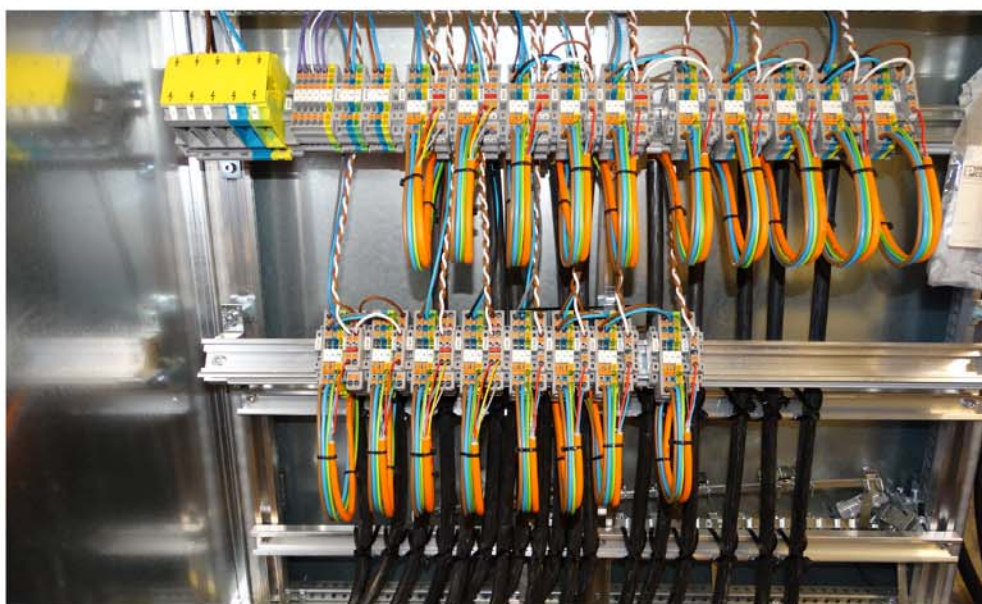
Services provided by
Marti Technik AG

Section 1.12
Switchgear assemblies

Section 1.21
Tunnel lighting systems

Section 1.23
Optical control equipment and
fire emergency lighting

Section 1.71
Signal cabling and fibre optic cable



The Biel bypass consists of a so-called East Branch and a West Branch. Marti Technik AG has received several contracts for the manufacture and supply of electrical engineering for the East Branch project.