

Rhone Oberwald hydroelectric power plant

Ventilation and smoke extraction system Rhone Oberwald hydroelectric power plant

In 2015 and 2018, FMV SA (Forces motrices valaisannes) built a new hydroelectric power plant by the Rhone in Obergoms. This system, which is practically completely in the mountain, uses the slope of the Rhone between Gletsch and Oberwald.

The power plant consists of a water catchment, 2.2-km long pressure tunnel, the underground power plant and the access galleries (350 m long). The power plant produces an annual output of around 41 GWh with an installed capacity of 14 MW.



Constructor
FMV SA Sion

Realisation
2017 / 2018
Commissioning 2018





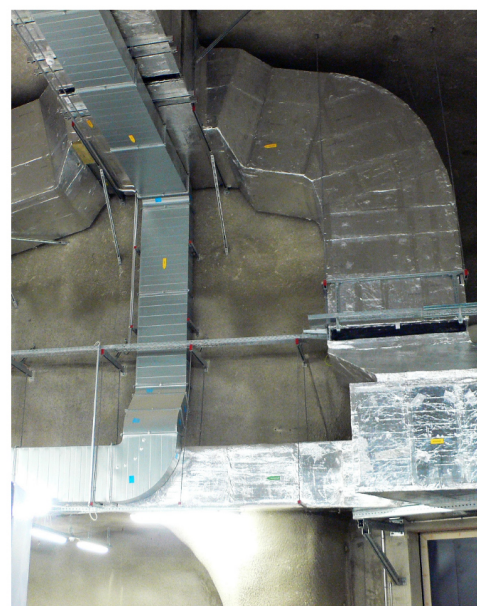
Work carried out (Delivery, assembly, commissioning)

Smoke extraction for the underground control centre and access gallery:

- Smoke extraction fan
- Smoke extraction pipes
- Various dampers

Ventilation of the underground control centre and gallery system:

- Monoblock
- Fans
- Ventilation pipes



Services provided by Marti Technik AG

Marti Technik AG, in collaboration with Niersberger AG, delivered and installed the ventilation and smoke extraction system for the underground power plant and access galleries.

This included both the actual ventilation systems (fans, ducts, dampers) and the control system and energy supply.